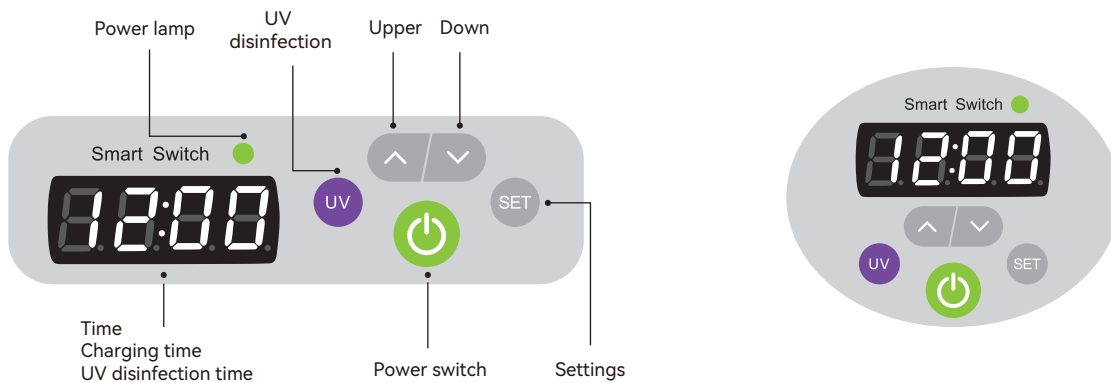


Smart Digital Control Panel



- **UV-C disinfection setting**

Please press the UV button and it will finish cleaning in 5 minutes. Opening the door. Disinfectant lights will be turned off.

- **Charging setting**

Please press power button, it will start to work.

- **Countdown charging**

Please press SET key, C means charging. The number means the charging time, Press the Set key to make it take effect.

Example C05 means, 5 hours off charging ;
 C08 means, 8 hours off charging ;

- **Child lock setting**

Long press the UP key for 4 seconds, you can hear the "beep" sound, and the child lock will take effect.

- **Local time setting**

Long press the setting key, when the number flashes, you can press the up/down key to adjust, after the setting, press the setting key to confirm.

- **Cooling fan**

When cabinet has 45°C, it will auto turn on.

Safety and maintenance precautions

For long term storage , remember to unplug the power cord and cover the cabinet with a dust cover.

Tips :

Before start using this product, please read the instructions carefully Please strictly follow the instructions for installation, application and maintenance. We will not be responsible for any damage caused by the wrong operation.

Only authorized staff can use the cabinet, and only professional maintainer can maintain the cabinet.



- **Must ground lead**

The power socket must be grounded to avoid electric leakage. The cabinet must be located in a suitable storage place.



- **Avoid slope**

The wheels must be locked to prevent any movement. Before moving, release the lock on the wheel.



- **Avoid high temperature**

In order to prolong the life cycle, avoid rain and direct sunlight. Do not store the cabinet next to the window.

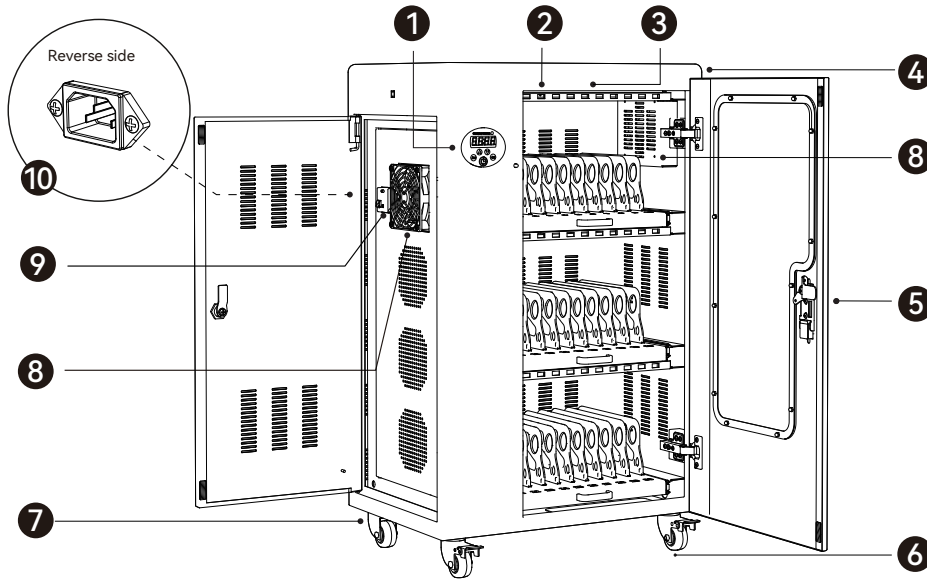


- **Avoid moisture**

When cleaning, do not pour water or alcohol directly on the cabinet, liquids will damage the internal circuit.



Overview

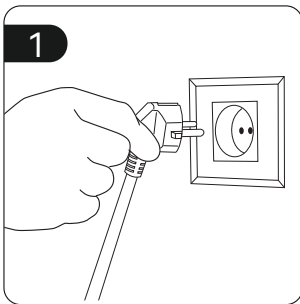


1. Switch
2. USB Charging Interface
3. LED Indicator
4. Handles(optional)
5. Cabinet Lock
6. Stand Wheel with lock
7. Stand Wheel
8. Cooling fan
9. Leakage Protective Switch
10. Power Interface

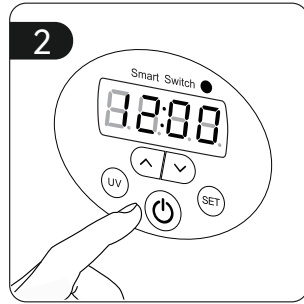
Package Contents

- AC Power Cord x1
- USB charging cables are matched according to product bits
- Instruction Booklet x1

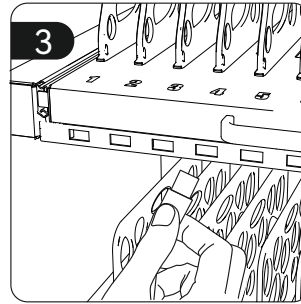
Using the Charging Cart



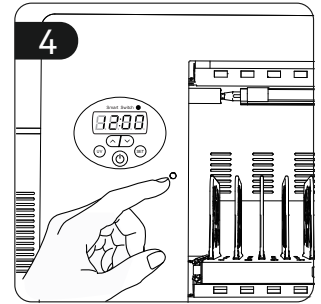
1 Plug in the power cord of the charging cabinet.



2 green power switch and UV disinfection switch (Please refer to page 2).



3 Connect the device with the USB charging cable.



4 Opening the door. UV-C lights will be turned off.

Charging indicator: ● Charging ● Charging completed/waiting to be charged

Product Specs



Model	QP-R10TB	QP-R20TB	QP-R30TB	QP-R40TB	QP-R52TB	QP-R60TB	QP-R65TB
Capacity	10	20	30	40	52	60	65
Input Voltage	220V/50Hz	220V/50Hz	220V/50Hz	220V/50Hz	220V/50Hz	220V/50Hz	220V/50Hz
Outage Voltage	5V/2.4A*10USB	5V/2.4A*20USB	5V/2.4A*30USB	5V/2.4A*40USB	5V/2.4A*52USB	5V/2.4A*60USB	5V/2.4A*65USB
Pated Power	200W	300W	400W	600W	600W	800W	800W
Product Size	540*390*330mm	556*400*665mm	556*400*920mm	556*400*1190mm	556*400*1190mm	650*400*1455mm	650*400*1455mm
Package Size	610*470*410mm	630*470*740mm	630*470*990mm	630*470*1245mm	720*470*1245mm	720*470*1510mm	720*470*1510mm
Net Weight	15kg	31kg	44kg	52kg	60kg	73kg	74kg
Gross Weight	19kg	37kg	53kg	61kg	70kg	85kg	86kg