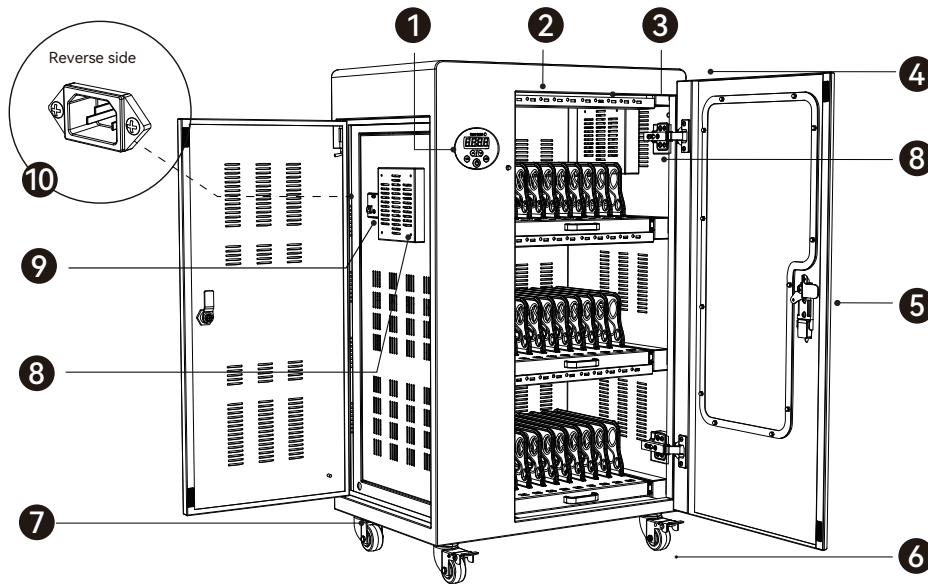


Overview

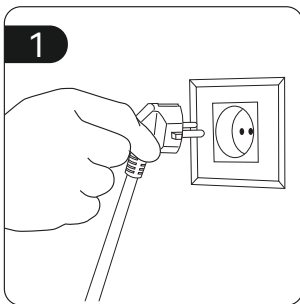


1. Switch
2. Type-C Fast charging
3. LED Indicator
4. Handles(optional)
5. Cabinet Lock
6. Stand Wheel with lock
7. Stand Wheel
8. Cooling fan
9. Leakage Protective Switch
10. Power Interface

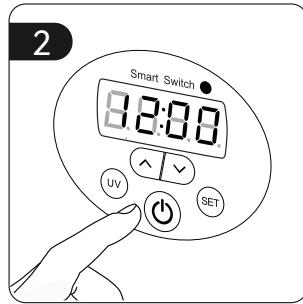
Package Contents

- AC Power Cord x1
- USB charging cables are matched the quantity of USB charging ports
- Instruction Booklet x1

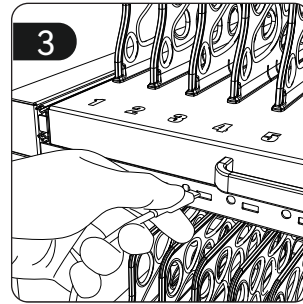
Using the Charging Cart



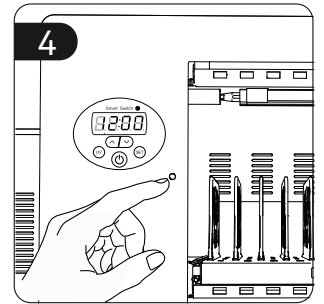
1 Plug power cord into the charging cabinet.



2 Green power switch and UV disinfection switch (Please refer to page 2)



3 Connect the device to cabinet via USB charging cable.



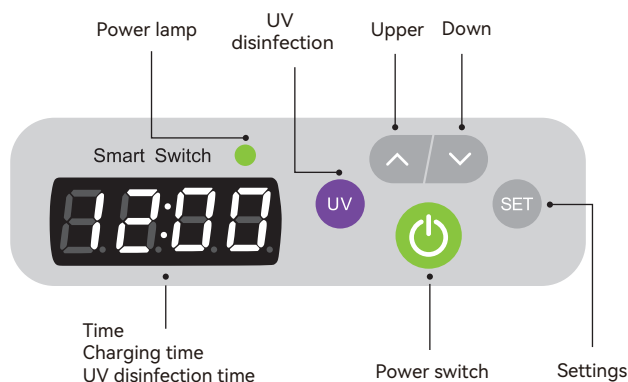
4 Opening the door. UV-C lights will be shut of.

Charging indicator: ● Charging ● Fast charging ● Charging completed/waiting to be charged

Product Specs

Model	QP-R10TB-30W	QP-R20TB-30W	QP-R30TB-30W	QP-R40TB-30W
Charging Numbers	10	20	30	40
Input Voltage	220V/47~63Hz	220V/47~63Hz	220V/47~63Hz	220V/47~63Hz
Output Voltage	30W* 10Type-C	30W* 20Type-C	30W* 30Type-C	30W* 40Type-C
Pated Power	348W	696W	1044W	1392W
Product Size	540*390*330mm	556*400*665mm	556*400*920mm	556*400*1195mm
Package Size	610*470*410mm	630*470*735mm	630*470*990mm	630*470*1260mm
Net Weight	15kg	31kg	44kg	52kg
Gross Weight	19kg	37kg	52kg	60kg

Smart Digital Control Panel



- **UV-C disinfection setting**

Please press the UV button and it will finish disinfection in 5 minutes. Opening the door. Disinfectant lights will cut the power

- **Charging setting**

Please press power button, it will start to work.

- **Countdown charging**

Please press SET key ,Cmeans charging. The number means the charging time . Press the Set key to make it take effect.

Example C05 means, 5 hours off charging ;
C08 means, 8 hours off charging ;

- **Child lock setting**

Long press the UP key for 4 seconds, you can hear the "beep" sound, and the child lock will take effect.

- **Local time setting**

Long press the setting key, when the number flashes, you can press the up/down key to adjust, after the setting, press the setting key to confirm.

- **Cooling fan**

When cabinet is over 45°C, it will be auto turned on.

Safety and maintenance precautions

For long term storage , remember to unplug the power cord and cover the cabinet with a dust cover.

! Tips :

Before start using this product, please read the instructions carefully Please strictly follow the instructions for installation, application and maintenance.We will not be responsible for any damage caused by the wrong operation. Only authorized staff can use the cabinet, and only professional maintainer can maintain the cabinet.



- **Must ground lead**

The power socket must be grounded to avoid electric leakage. The cabinet must be located in a suitable storage place.



- **Avoid slope**

The wheels must be locked to prevent any movement. Before moving, release the lock on the wheel.



- **Avoid high temperature**

In order to prolong the life cycle, avoid rain and direct sunlight. Do not store the cabinet next to the window.



- **Avoid moisture**

When cleaning, do not pour water or alcohol directly on the cabinet, liquids will damage the internal circuit.